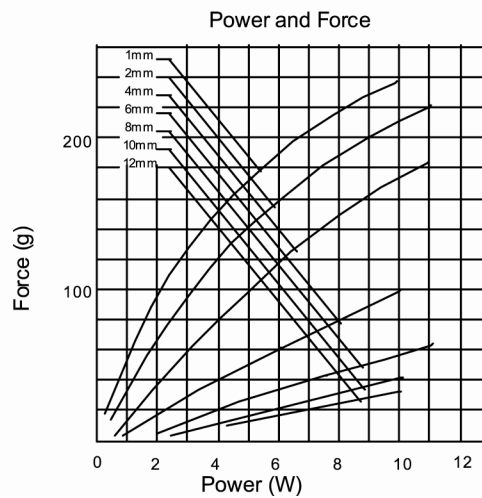
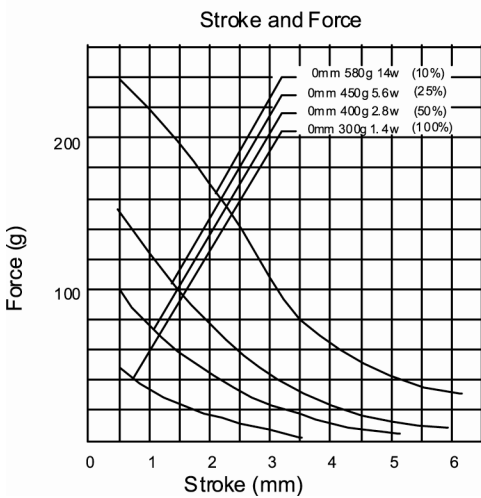
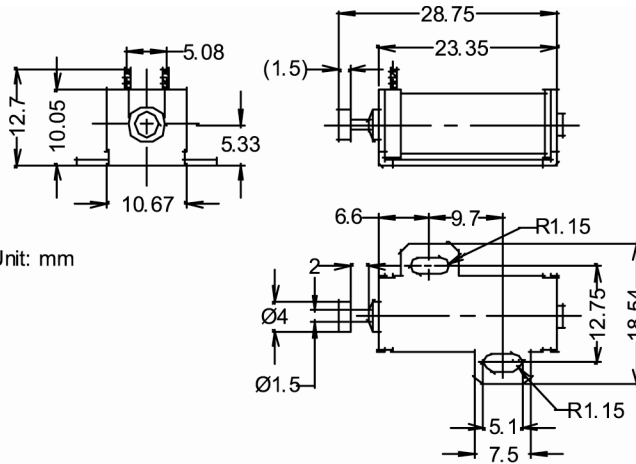


# C-Frame Solenoid

GC0423



- Pull Type
- Thrust Type
- Flying Leads
- Terminals
- Zinc Plated Frame
- Nickel Plated Plunger
- Customised Plunger Ends
- Customised Fixings
- Optional Voltages



### Standard Coil Specifications

Cont. rating(at20 °C):1.4w

Voltage(VDC)	Resistance(Ω)	Current(mA)
6	25.7	233
12	102.8	117
24	413.8	58

Total weight : 10g  
Plunger weight : 3g