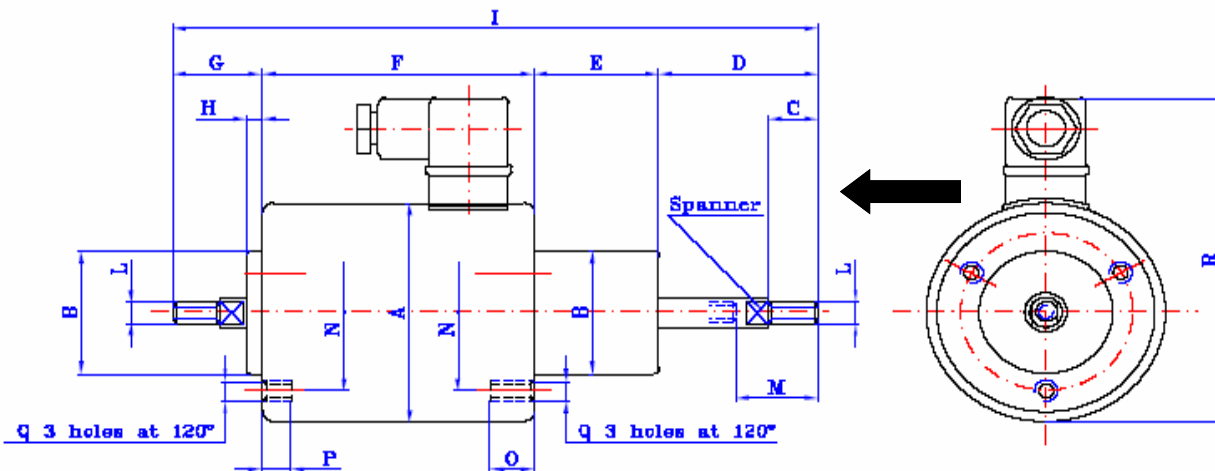


# Tubular Solenoid (Model CS70)

GT2876



- Pull & Thrust Type
- DIN 43650 Connector
- Return spring available
- Bearing mounted
- Potted version available
- Bellows and feet available
- 25mm Stroke at 180°C
- 100% ED Rated 28N 50W
- 25% ED Rated 60N 200W
- 5% ED Rated 135N 1000W



Dimensions (mm)

A	B	C	D	E	F	G	H
Ø70	Ø40	15	46	37	76	27	6
I	L	M	N	O	P	Q	R
186	M6	25	Ø52	8	8	M5	110