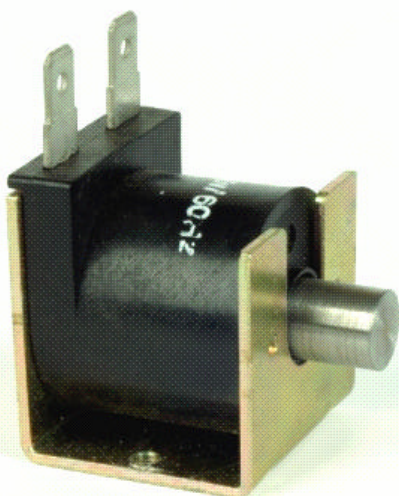


# C-Frame Solenoid

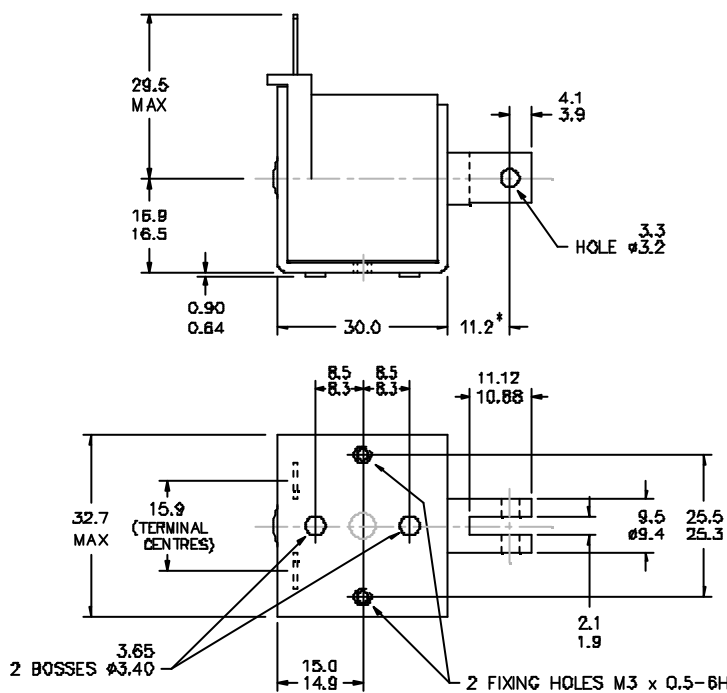
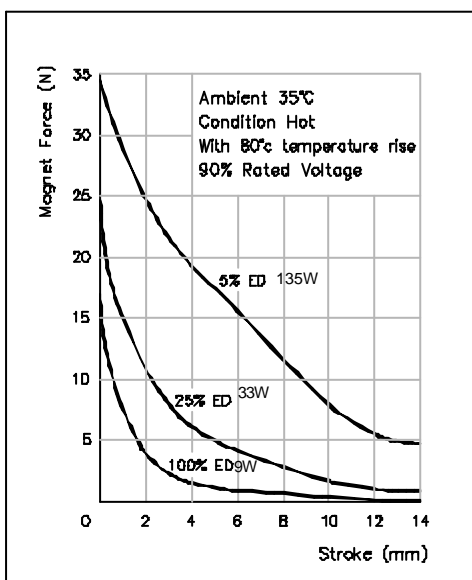
MC0930



- Optional Pull or Thrust Type
- Customised Plunger Ends
- Flying Leads with Optional Connectors
- Optional Voltage Ratings
- Optional Tagged & Encapsulated Coils
- Customised Fixing Holes
- Optional Return Spring
- Alternative Plating Finishes
- Optional Anti-Impact Washer

If plunger works with gravity:  
stroke force = magnet force + plunger weight force.

If plunger works against gravity:  
stroke force = magnet force - plunger weight force.



\* DIMENSIONS WITH SOLENOID ENERGISED. TOLERANCES (UNLESS STATED)  $\pm 0.4$ mm.